

Flame Photometer

Aa

Bb

Cc

Dd

Ee

Ff

Gg

Hh

Ii

Jj

Kk

Ll

Mm

Nn

Oo

Pp

Qq

Rr

Ss

Tt

Uu

Vv

Ww

Xx

Yy

Zz



Flame Photometers

The Jenway models PFP7 and PFP7/C are single channel emission flame photometers designed for routine determination of Sodium (Na), Potassium (K). Additional filters are available for the measurement of Lithium (Li), Barium (Ba) and Calcium (Ca). Both instruments are fitted with automatic flame failure detection for user safety.

- Both models are supplied with Sodium and Potassium filters, connecting hoses and clips, compressor plug, drain trap, fuses, mains lead and manual
- Fine and coarse sensitivity controls
- Operates on propane, butane, natural gas or L.P.G. supplies
- Electronic flame failure protection
- Recorder output

Catalogue No	F470-107	F470-109
Model	PFP7	*PFP7/C
Ranges	0-199.9mmol/l Na (linearised)	120-160mmol/l Na (linearised)
		0-10.0 mmol/l K
Limits of detection	Na/K -0.2ppm	Li -0.25ppm
	Li -0.25ppm	Ca -15ppm
	Ca -15ppm	Ba -30ppm
	Ba -30ppm	
Reproducibility	-1% / Coefficient of Variation for 20 consecutive samples using 10ppm Na set to read 50	
Linearity	Better than 2% when concentration of 3ppm Na/K and 5 ppm Li are set to read 100	
Specificity	Interference from Na, K and Li equal in concentration to test element will be <0.5%	
Recorder o/p	Nominal 1.00V for a reading of 100.0	
Services	Electrical: 90-125V or 190-250V at 50/60Hz	
	Air: Moisture and oil free 6 litre/minute at 1 Kg/cm ² (14psi)	
	Fuel: Propane, Butane, Natural Gas or L.P.G	
Dimensions (l x h x w), mm	420 x 360 x 300	
Weight, Kg	8	

*The Model PFP7/C is designed specifically for use in clinical applications. The in-built lineariser circuitry enables readings of both sodium and potassium, at normal clinical serum concentrations, to be displayed directly in mmol/l. Serum samples need to be diluted 200:1 or 100:1 prior to presentation to the

Catalogue No	Description
These products will only operate with the correct type air compressor and gas regulator as specified	
F470-120	Air compressor (220V/50Hz)
F470-122	Air compressor (110V 60Hz)
F470-124	Butane regulator
F470-126	Propane regulator
F470-128	Natural gas regulator
F470-130	Minor spares kit
F470-132	Major spares kit
F470-134	Series 7 Diluter
It is recommended that the following filters be factory fitted at the time of ordering	
F470-140	Calcium filter
F470-142	Lithium filter
F470-144	Barium filter
Reagents - clinical standards (pack quantities of 500ml)	
F470-160	1.00 mmol/l Li
F470-162	100 mmol/l Na/K
F470-164	140 mmol/l Na/5 mmol/l K
F470-166	120 mmol/l Na/2 mmol/l K
F470-168	160 mmol/l Na/8 mmol/l K
F470-170	160 mmol/l Na/80 mmol/l K
Reagents - industrial standards (pack quantities of 500ml)	
F470-182	1000 ppm K
F470-184	1000 ppm Li
F470-186	3000 ppm Ba
F470-188	1000 ppm Na
F470-190	1000 ppm Ca

Flame Photometer

Flame Photometers, Models 410 and 420

A choice of single and dual channel emission flame photometers for routine determination of Alkali and Alkaline Earth Metals.

- Single and dual readout for industrial and clinical samples
- Manual and automatic with internal standard
- Fully automatic system with intelligent autosampler
- Integral 'fail-safe' flame monitoring
- Full safety features and ergonomic design
- Recorder output



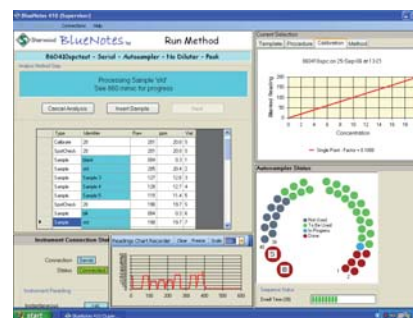
Catalogue No Classic model without digital interface	F470-318	
Catalogue No Clinical models with digital interface	F470-320	F470-330
Catalogue No Industrial models with digital interface	F470-322	F470-332
Model	410	420
Elements analysed	Na, K, Li, Ca, Ba, Cs, Rb, Sr Single element displayed	Na, K (with Li Int Std) Li Dual and single elements can be displayed
Limits of detection Na/K/Li/Ca/Ba	20ppb/20ppb/20ppb/0.2ppm/20ppm	20ppb/20ppb/20ppb
Sensitivity to give 100 units, ppm Na/K/Li/Ca/Ba	0.5/0.5/0.5/5.0/1000	0.5/0.5/0.5
Linearity	±1% midpoint 3ppm Na=100	
Specificity interference Na, K	0.5% of concentration of element under test	
Reproducibility	<2% 10ppm	<0.5% (with internal standard) 10ppm
Gas control/ optimisation	Manual	Automatic
Internal standard	No	Yes
Result stored	No	Yes
Result display	Manual estimation	Auto peak
Fuel	Butane, propane, natural gas	Butane or propane, LPG
Dimensions (hxxwd), mm	510 x 390 x 345	510 x 390 x 345
Weight	9.5	10
Accessories	Diluter, digital interface, BlueNotes	Diluter, printer, auto sampler

Note: These units will only operate with the correct type of air compressor and gas regulator. These are not supplied, please refer to the accessories below.

Accessories

Catalogue No	Description
F470-341	Printer for model 420
F470-343	M 805 Diluter
F470-345	Auto sampler for model 420
F470-347	Compressor - 230V
F470-349	Compressor (water trap)
F470-351	Primary butane regulator
F470-353	Primary propane regulator
F470-355	Natural gas regulator for model 410
F470-356	Filter holder kit
F470-357	Na filter
F470-359	K filter
F470-361	Li filter
F470-363	Ca filter for model 410
F470-365	Ba filter for model 410
F470-367	Deproteinising solution
F470-369	Cleaning solution
F470-371	Multi-element standard (Li,Na,K), 100ml
F470-373	Digital interface / lineariser module giving printer output or PC connection
F470-375	410 BlueNotes software

F470-375



Aa

Bb

Cc

Dd

Ee

Ff

Gg

Hh

Ii

Jj

Kk

Ll

Mm

Nn

Oo

Pp

Qq

Rr

Ss

Tt

Uu

Vv

Ww

Xx

Yy

Zz