

Water Testing Specialists...

Water Quality & Environmental Testing:

Detailing our full range of water testing equipment and instrumentation.

To order your copy please contact our sales team:

Tel: +44 (0)1635 872 929

Email: sales@wagtech.co.uk

water quality & environmental testing

- Aa
- Bb
- Cc
- Dd
- Ee
- Ff
- Gg**
- Hh
- Ii
- Jj
- Kk
- Ll
- Mm
- Nn
- Oo
- Pp
- Qq
- Rr
- Ss
- Tt
- Uu
- Vv
- Ww
- Xx
- Yy
- Zz

G194-360



Gas Cylinder Support

Designed to support gas cylinders up to 300mm dia. in a vertical position. Can be screwed to a wall for a permanent fixing, or clamped to a bench, up to 70mm thick. Complete with fire resistant webbing strap and non slip buckle.

Catalogue No **G194-360**

Gas Cylinder Stands

Cylindrical stands constructed in rolled and formed mild steel flat section, fully welded throughout. Finished in blue epoxy.



| Catalogue No | G194-511 | G194-512 | G194-513 |
|-----------------------|----------|----------|----------|
| Cylinder diameter, mm | 100 | 140 | 180 |
| Height, mm | 330 | 380 | 610 |
| Base diameter, mm | 310 | 345 | 420 |
| Weight, Kg | 9 | 10 | 11 |

Gas Jars

Borosilicate glass with ground top flange. Not supplied with covers.

| Catalogue No | Height, mm | Diameter, mm | Pack qty. |
|-----------------|------------|--------------|-----------|
| G406-240 | 150 | 50 | 10 |
| G406-244 | 200 | 50 | 10 |
| G406-248 | 250 | 50 | 10 |

Accessory

| Catalogue No | Description | Pack qty. |
|-----------------|---------------------|-----------|
| G406-256 | Gas Jar Cover, 75mm | 10 |

Pneumatic Troughs

- Heavy wall soda glass
- Cylindrical

| Catalogue No | Dia x Height, mm |
|-----------------|------------------|
| G652-210 | 200 x 100 |
| G652-214 | 200 x 200 |
| G652-218 | 300 x 125 |

Beehive Shelves

Stoneware, glazed inside and out, used in pneumatic troughs for gas collection.

| Catalogue No | Description |
|-----------------|---------------------------|
| G732-075 | Beehive shelf, 75mm, dia |
| G732-100 | Beehive shelf, 100mm, dia |

Wood Splints

Supplied in bundles of approx. 1000

| Catalogue No | G764-740 |
|--------------|-----------------|
| | |

Kipps Apparatus

- Borosilicate glass with ground joints
- Comprising three chambers and a safety funnel
- Overall height 650mm, capacity of central bulb 1000ml

| Catalogue No | G764-945 |
|--------------|-----------------|
| | |

Gauzes, Iron Wire, Plain

Plain gauzes with folded edges.

| Catalogue No | Size mm | Pack qty. |
|-----------------|-----------|-----------|
| G782-105 | 125 x 125 | 10 |
| G782-110 | 150 x 150 | 10 |

Gauzes, Iron Wire, Ceramic Centre

Gauzes with flat circular ceramic centre and folded edges.

| Catalogue No | Size mm | Pack qty. |
|-----------------|-----------|-----------|
| G782-116 | 125 x 125 | 10 |
| G782-122 | 150 x 150 | 10 |

Glass Cutting Knife

Super-hard non ferrous alloy blade, 65 x 13 x 1.6mm, mounted in a wood holder with a brass clamping jaw. Can be sharpened on a fine silicone carbide block.

| Catalogue No | G835-175 |
|--------------|-----------------|
| | |

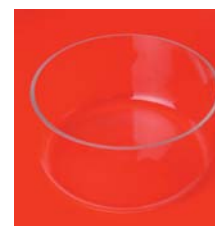


G406-256



G406-244

G652-214



G732-075



G764-740



G764-945



G835-175

Aa

Bb

Cc

Dd

Ee

Ff

Gg

Hh

Ii

Jj

Kk

Ll

Mm

Nn

Oo

Pp

Qq

Rr

Ss

Tt

Uu

Vv

Ww

Xx

Yy

Zz