

# AUTOMATIC WEATHER STATIONS

meteorology  
&  
environmental  
monitoring ...

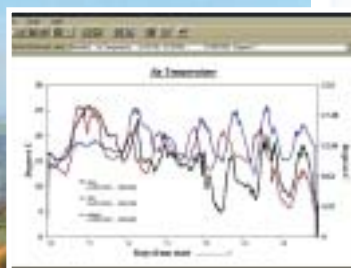
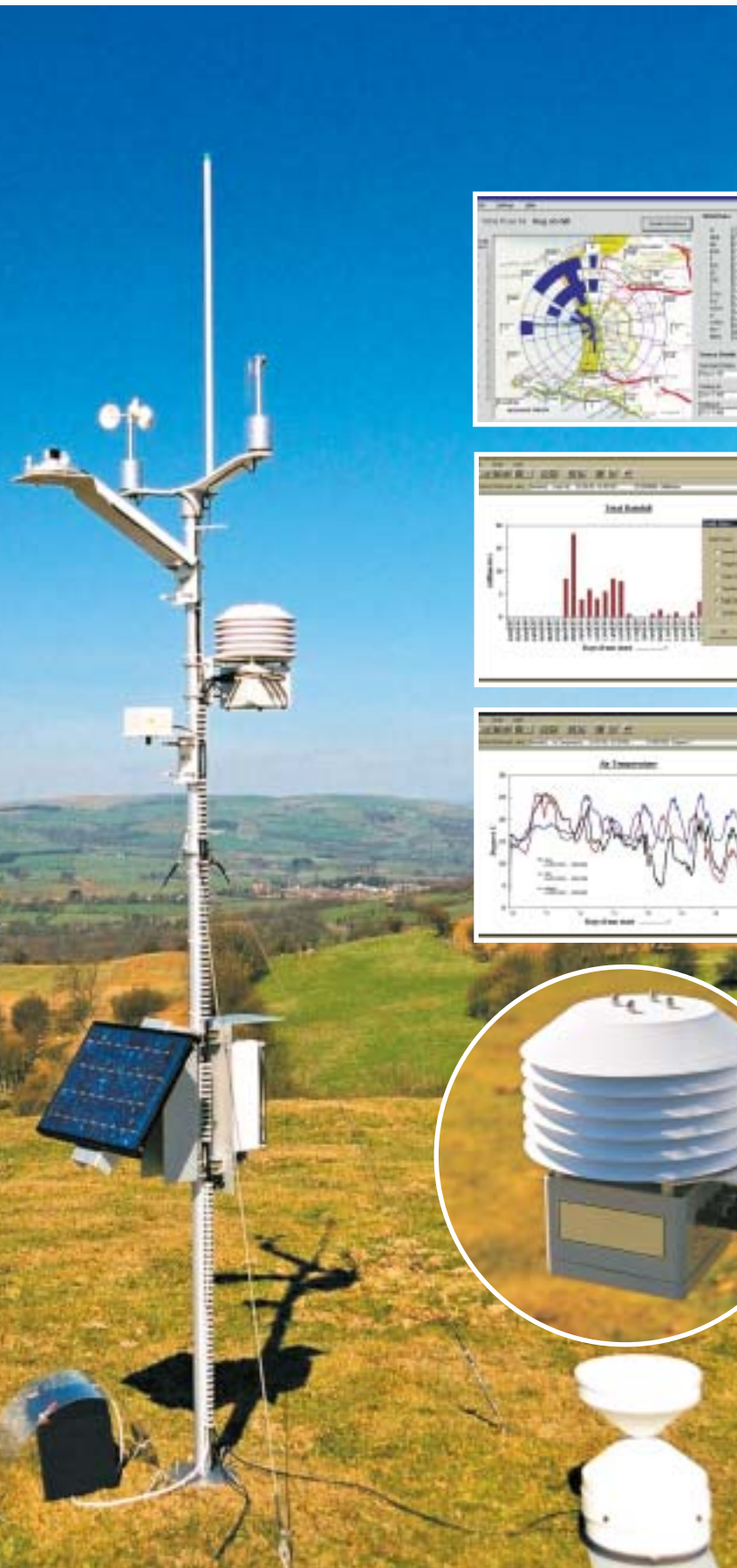
- Water Resource Studies.
- Agricultural & Crop Research.
- Environmental Studies.
- Commercial Farmers.
- Leisure Industry.

Software supplied with the Automatic Weather Station can be used to determine the following:

- Water Balance
- Total Rainfall
- Windrose
- Site Overlays
- Evapo-transpiration
- Historical Weather records

Wagtech offer a range of standard monitoring systems for specific applications. These are supplied fully assembled and ready to start. No special skills are required to operate them and the data can be processed easily using the computer software supplied.

The Automatic Weather Station shown opposite, comprise a datalogger mounted within a weatherproof case on a 2m frame. Power supply is via internal alkaline batteries with alternative options available. Different communication options are also available to enable the weather data to be retrieved at anytime.



**Purchase details****Wagtech Automatic Weather Station:**

Comprises sensors for measuring all the key weather parameters i.e, wind speed, wind direction, air temperature, relative humidity, rainfall and solar radiation. Supplied complete with datalogger, 2m frame, battery pack and computer software.

Wag-WE60800

**Wagtech Hydrological Monitoring Station:**

Comprises sensors for measuring wind speed, wind direction, rainfall and water level (0-10m). Supplied complete with datalogger, 2m frame, solar charger unit, re-chargeable battery pack and computer software.

Wag-WE60825

**Wagtech Windspeed & Direction Monitor:**

Comprises sensors for measuring wind speed and wind direction. Supplied complete with datalogger, frame, re-chargeable battery pack.

Wag-WE60850

**Accessories****Sensors:**

Our standard systems use the most common weather sensors. However, a wide range of sensors are available for use with the weather station. These are Air Temperature, Relative Humidity, Wind speed, Total Solar Radiation, PAR Quantum, UVA, Barometric Pressure, Soil Temperature, Rain Gauge, Surface Wetness, Tensiometer and Water Level.

Please contact Wagtech International if you require a non standard Automatic Weather Station using the above range of sensors.

**Power supply:**

Wagtech Automatic Stations are fitted with alkaline batteries as standard. These will have a lifetime of 4-6 months depending on operating temperature, frequency of logging and data download.

**Solar Power Unit:** for use with standard datalogger Wag-WE60854

**Communications & Computer Software:**

The standard weather station is supplied with a 2m long RS232 communications cable and standard downloading software. A laptop computer is required to retrieve the data on site. Additional software is available to display the data, build graphs and windroses etc and to monitor the operation of up to 25 weather stations.

**Other options include:**

- Permanent cable link which is used with mains power supply and the communications distance is no more than 1km.
- Line modem link also uses the mains power supply and standard telephone connection.
- GSM Modem unit is available to enable communication with the station 24 hours a day using the local cell phone network.

**Laptop Computer** Wag-WE60862

**Permanent Cable Link (per meter)** Wag-WE60864

**Line Modem Link (per meter)** Wag-WE60866

**GSM Modem Unit** Wag-WE60868

**Solar Power Supply** for use with GSM Modem Link. Wag-WE60870

**Deluxe Software** for use with the standard datalogger to display the weather data, build graphs and windrose etc.

Wag-WE60872

**Deluxe Auto software** for use with up to 25 weather stations to monitor and download data automatically.

Wag-WE60874

